



White Paper

## What's New in BarTender 9.4

Enhanced Rich Text, Two-sided Printing,  
Live Database View While Editing,  
and Many Other Improvements

<b>Overview of New Features in BarTender 9.4 .....</b>	<b>5</b>
<b>New Rich Text Object .....</b>	<b>5</b>
<b>Two-Sided Printing .....</b>	<b>5</b>
<b>Live Database View in Label Design View .....</b>	<b>5</b>
<b>Embedded Revision Log .....</b>	<b>5</b>
<b>System Database SDK.....</b>	<b>6</b>
<b>Librarian SDK .....</b>	<b>6</b>
<b>Many Other Improvements.....</b>	<b>6</b>
<b>The Powerful new Rich Text object.....</b>	<b>6</b>
<b>Prior to 9.4 .....</b>	<b>7</b>
<b>New in 9.4.....</b>	<b>7</b>
Much Easier to use Multiple Fonts.....	7
Advanced Text Formatting, including Embedded Pictures .....	7
Three Supported Markup Languages.....	7
Create Rich Text using BarTender’s WYSIWYG Editor .....	8
Read Externally Authored RTF, HTML, or XAML.....	8
Create RTF, HTML, or XAML on the Fly Using VB Script .....	8
Print Objects Other than Text, Such as Vector-based Graphics, Using XAML .....	8
<b>Special Note Regarding Printer Resident Fonts .....</b>	<b>8</b>
<b>Using Rich Text .....</b>	<b>8</b>
Object Toolbar .....	8
Modify Dialog.....	8
Full Rich Text Editor Dialog .....	9
Step-by-step Instructions.....	10
<b>Two-Sided Printing .....</b>	<b>12</b>
<b>Prior to 9.4 .....</b>	<b>12</b>
<b>New in 9.4.....</b>	<b>12</b>
<b>Using Two-Sided Printing.....</b>	<b>13</b>
Page Setup Dialog .....	13
Changes to the Print Dialog.....	14
<b>Live Database View in Label Design View .....</b>	<b>14</b>
<b>Prior to 9.4 .....</b>	<b>14</b>
<b>New in 9.4.....</b>	<b>14</b>
<b>Usage.....</b>	<b>14</b>
Database Navigator Toolbar .....	14

<b>Embedded Revision Log .....</b>	<b>15</b>
<b>Prior to 9.4.....</b>	<b>15</b>
<b>New in 9.4.....</b>	<b>15</b>
<b>Usage.....</b>	<b>16</b>
The Administration, BarTender Document Setup Dialog.....	16
The File, View Embedded Revision Log Dialog.....	16
<b>System Database SDK.....</b>	<b>17</b>
<b>Prior to 9.4.....</b>	<b>17</b>
<b>New in 9.4.....</b>	<b>17</b>
<b>Usage.....</b>	<b>18</b>
BarTender's .NET SDKs .....	18
<b>Librarian SDK .....</b>	<b>18</b>
<b>Prior to 9.4.....</b>	<b>18</b>
<b>New in 9.4.....</b>	<b>18</b>
<b>Usage.....</b>	<b>19</b>
BarTender's .NET SDKs .....	19
<b>Other Improvements.....</b>	<b>19</b>
<b>Bar Codes.....</b>	<b>19</b>
Target X Dimension.....	19
Lock X Dimension.....	20
Manual Bar/Space Adjustment .....	20
ITF-14: New Symbology.....	20
ITF-14: Device Printing of Bearer Bars.....	20
UPC/EAN: Quiet Zone Indicators in Human Readable.....	20
Code 128: Encode Alternate Character Sets .....	20
QR Code: Manual Selection of a Fixed Size .....	20
GS1 Composite, GS1-128 (CC-C): Column Control.....	21
GS1 Composite, UPC/EAN: Guard Bars .....	21
<b>Prompting .....</b>	<b>21</b>
Integrated Print Preview .....	21
Easier Group Box Editing.....	21
Additional Scale Manufacturers Added.....	21
<b>Minor Usability Improvements.....</b>	<b>22</b>
Partial Human Readable Visibility .....	22
Logging Sub-strings to a Text File .....	22
<b>The Online Help System.....</b>	<b>22</b>
Unified Table of Contents.....	22
<b>Batch Maker .....</b>	<b>22</b>

Added support for Media Handling .....	22
Improved UI for Managing the Label Format List .....	22
<b>Security Center</b> .....	<b>23</b>
Added "Save As" Permission .....	23
<b>Automation and SDKs</b> .....	<b>23</b>
Moved all SDKs and Dependent Assemblies into the GAC .....	23
Added New ActiveX Automation Interfaces .....	23

## Overview of New Features in BarTender 9.4

BarTender 9.4 adds the following exciting new features:

- Easily design sophisticated rich text objects using a WYSIWYG editor
- Print two-sided documents
- Live database view in the Label Design View
- Record and view a history of edits made to a BarTender document
- Automate new tasks using the new System Database and Librarian SDKs

In addition, version 9.4 delivers a wide variety of improvements to existing features, especially bar codes.

### New Rich Text Object



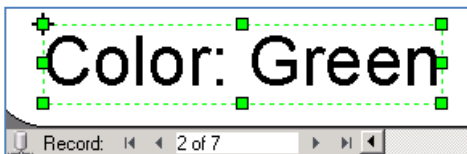
A new Rich Text object has been added to BarTender. It allows you to easily create text objects with much more sophisticated formatting than is possible with BarTender's existing Text object. This includes specifying multiple fonts, columns, indenting, superscript, subscript, embedding pictures, bullets, and numbering. (Requires the Professional edition or better.)

### Two-Sided Printing



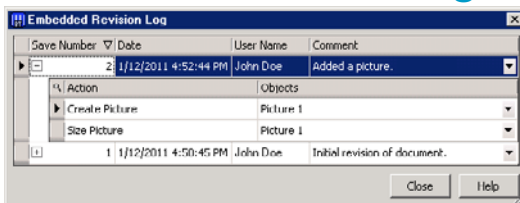
BarTender 9.4 lets you create separate designs for the front and back of the item you are printing. Using a duplex-capable printer, you can now automatically print on both sides of your media. (Requires the Professional edition or better.)

### Live Database View in Label Design View



Now you can view database fields merged into your design in the Label Design Area, instead of having to perform a Print Preview. You can even browse through your database records. (Access to external data, including the live database view, requires the Professional edition or better.)

### Embedded Revision Log



When the Embedded Revision Log feature is enabled, BarTender embeds revision history information into the Label Format (BTW File) every time it is saved. This information includes a list of actions that were performed on the document (e.g. Added Text Object, Moved Text Object and Changed Font Size), as well as

which objects were changed, when the changes were made, who made them, and an optional user-supplied comment. The Revision Log can be used in combination with Librarian's sophisticated workflow management functions to create a remarkably powerful document control system. (Revision Log requires the Professional edition or better. Librarian and its workflow management features require the Enterprise Automation edition.)

## System Database SDK

The System Database SDK is used to give other programs automated access to the BarTender System Database. This allows other programs to query data about BarTender Print Jobs, Application Messages, and other data using complex filters to obtain information such as a print job's final status or entire history. It is also now possible to reprint past print jobs under automated control. (The BarTender System Database and the associated SDK are available with the Automation edition or better.)

## Librarian SDK

The Librarian SDK is used to give other programs automated access to Librarian. Now, other programs can add, remove, or rename files or folders, query file information, check files in and out, and change their workflow state. (Librarian and the associated SDK are only available with Enterprise Automation edition.)

## Many Other Improvements

Many other improvements were made to:

- Bar Codes
- Prompting
- BarTender UI
- The Online Help System
- Batch Maker
- Security Center
- Automation and the SDKs

See the [“Other Improvements”](#) section below for details.

## The Powerful new Rich Text object

“Rich Text” is text that contains more than one font or font style within a single text object, such as a sentence or paragraph. For example, changing a word to *italics*, Arial or <sup>superscript</sup>

within a sentence makes this paragraph into “Rich Text.” The most common rich text formatting standard is simply called RTF.

## **Prior to 9.4**

In prior versions of BarTender, having multiple fonts or font styles within a single text object required the creation of a separate sub-string for each font. This structure was cumbersome to create and inconvenient to modify. Also, BarTender did not support any rich text formats other than RTF.

## **New in 9.4**

BarTender users can now create, edit, customize and print a wide variety of Rich Text objects, many of which simply weren't possible using label software until now. BarTender's Rich Text object can be used to print a wide variety of text objects, including ingredient lists, warnings, instructions, chemical formulas, legal disclaimers, warranty information, packing lists, etc. With support for the XAML format, you can also print vector-based graphics and other types of advanced drawings. The new Rich Text object provides many text formatting options that BarTender has not previously supported. The new WYSIWYG editor even makes basic font changes easier than it was with the previous Rich Text object user interface. (Support for the new Rich Text object is only available with the Professional edition of BarTender or better.)

### ***Much Easier to use Multiple Fonts***

Now, with BarTender's new Rich Text object, creating a text object that can use multiple fonts is a simple two-click process. And BarTender now includes a powerful WYSIWYG editor to simplify the editing and customization of your Rich Text objects.

### ***Advanced Text Formatting, including Embedded Pictures***

BarTender's new Rich Text object supports a great variety of rich text formatting capabilities, including columns, indenting, superscript, subscript, embedding pictures, bullets, numbering, and the merging of database fields and named sub-strings. At print time, BarTender's Rich Text objects can automatically reposition embedded pictures and merged database data in order to accommodate the rest of the rich text.

### ***Three Supported Markup Languages***

BarTender's Rich Text object supports three different markup languages:

- RTF (Rich Text Formatting, already discussed)
- HTML (Hypertext Markup Language)  
Limited to text formatting tags, such as fonts, tables and such. Does not support frames, anchors, code (e.g. JavaScript), and controls (e.g. Flash).
- XAML (Extensible Application Markup Language)

### **Create Rich Text using BarTender's WYSIWYG Editor**

You can use the powerful WYSIWYG editor built into BarTender to create and modify your Rich Text objects. Rich Text objects can be completely static or contain "Merge Fields," which allow database fields or named sub-strings to be merged in with static text. You can also easily embed graphics into your Rich Text.

### **Read Externally Authored RTF, HTML, or XAML**

You can use other applications to author rich text objects using one of the three supported markup languages and then paste them into BarTender as static Rich Text objects. Alternatively, you can store the objects in an external database and have BarTender read them from there as dynamic Rich Text objects.

### **Create RTF, HTML, or XAML on the Fly Using VB Script**

It is possible for advanced users to write a VB Script within BarTender that will dynamically create RTF, HTML, or XAML at print time. This could be used to access external data sources and produce tables, graphs, or diagrams on the fly. For example, this could be used to create text tables for use as a packing slip.

### **Print Objects Other than Text, Such as Vector-based Graphics, Using XAML**

XAML is capable of rendering much more than text and can be used to create vector based graphics that will scale to any size and still print in high resolution.

## **Special Note Regarding Printer Resident Fonts**

The new Rich Text object always prints as a graphic and can only use TrueType fonts. If you need to use printer-resident fonts, then you must use BarTender's regular Text object instead.

## **Using Rich Text**

### **Object Toolbar**

A new Create Rich Text object button has been added just to the right of the legacy Create Text object button. Use it just like the other object creation buttons in the toolbar to add a Rich Text object to the Label Design Area.

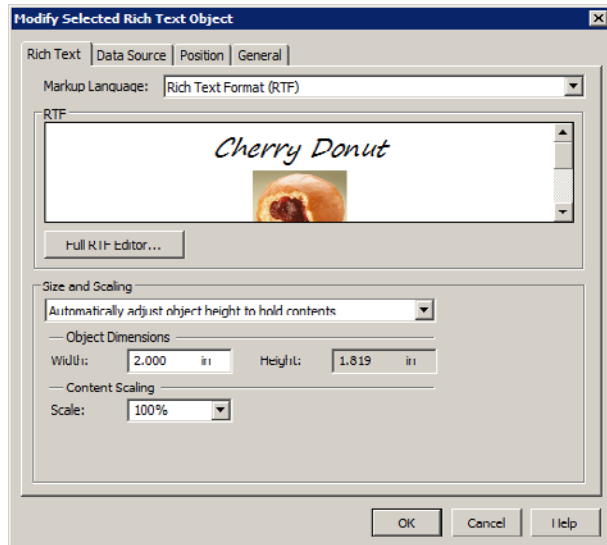


*Click once on the Create Rich Text button in the Object Toolbar and then once again in the Label Design Area to create a Rich Text object.*

### **Modify Dialog**

Once you have added a Rich Text object to your label, simply double-click it to view the Rich Text tab of the Modify dialog. This is where you will make modifications to the settings of the Rich Text object. This includes optionally modifying the scaling options -- for example, if you

want the content to dynamically scale to fit an arbitrary area. You can also open the full WYSIWYG Rich Text Editor from here. Press **Help** for additional information.



*The Modify Dialog for a Rich Text object.*

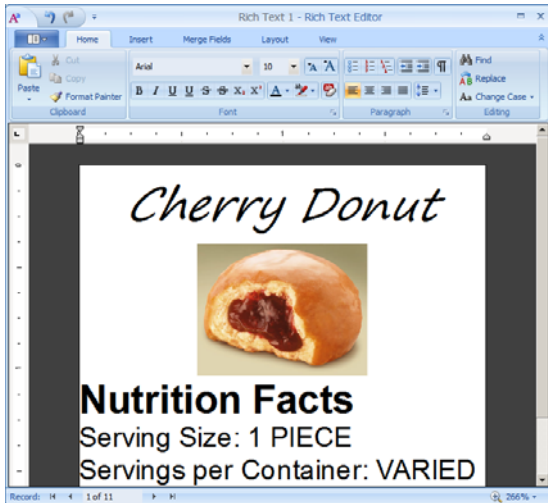
### **Full Rich Text Editor Dialog**

BarTender's built-in WYSIWYG Rich Text Editor allows you to specify a remarkable variety of rich text formatting features. It also allows you to embed pictures and insert merge fields. You can access the Rich Text Editor when your Rich Text object contains only one sub-string and is of type **Screen Data**. (This is the default case). Keep in mind that even though there is only one sub-string, it can contain multiple Merge Fields.

You can open the Rich Text Editor dialog two ways:

- Single-click the object in the Label Design Area.
- Or, press the **Full RTF Editor...** button from within the **Modify** dialog.

The Rich Text Editor also has a database navigator toolbar that allows you to see the live data from your database when selecting which fields to merge.





*The WYSIWYG Full Rich Text Editor.*

### **Step-by-step Instructions**


#### ***To Create and Customize a Rich Text object***

The easiest way to create and customize Rich Text objects is to create them within BarTender and modify them using BarTender's full Rich Text Editor. This technique works for both static Rich Text objects, as well as objects that will contain merge fields whose contents dynamically change at print time.

1. Click on the **Rich Text** button  of the Object Toolbar.
2. Click anywhere in the Label Design Area to create the default Rich Text object.
3. Single-click on the object to open the Rich Text Editor dialog.
4. Edit and format your text as desired.
5. If you want to add dynamic content to your Rich Text object:
  - Place your cursor into the location of your Rich Text object where you would like to insert a database field.
  - Click on the **Merge Fields** tab in the toolbar of the Rich Text Editor.
  - Click on the **Insert Database Field** button  and select the database field to insert.
6. Select one of the close or exit options and answer yes when asked whether or not you want to save your changes.

#### ***To Create a Rich Text object that uses Externally Authored HTML or XAML***



It is easy to import externally-authored rich text into BarTender. However, creating your own Rich Text objects using a markup language requires specialized knowledge.

1. From within the external rich text editing application, select the desired section of markup language and copy it to the Windows clipboard.
2. Within BarTender, click on the **Rich Text** button  of the **Object** Toolbar.
3. Click on the Label Design Area to create the default Rich Text object.
4. Double-click on the object to open the Modify dialog.
5. In the **Markup Language** option, choose the appropriate setting: RTF, HTML, or XAML.
6. Select the **Data Source** tab.
7. Paste your section of markup language into the **Screen Data** edit control using the standard Ctrl+V Windows keyboard action.
8. If you want to add dynamic content to your Rich Text object:
  - Using the **Advanced** view of BarTender's **Data Source** dialog, use cut and paste actions to convert the single Screen Data sub-string into multiple sub-strings. Ensure that the parts of the text object that you want to be dynamic are plain text only, and that the adjacent sub-strings contain the markup language.
  - For the sub-strings that are going to be dynamic, change the **Source** option from **Screen Data** to something that is dynamic, such as **Database Field**.
9. Press **Ok** to close the **Modify** dialog.

(You cannot use the Rich Text Editor to edit or customize HTML or XAML.)


### *To Create a Rich Text object that Reads Markup Language from a Database*

Reading markup language from a database is easy to do in BarTender. However, getting markup language into your database is not trivial and requires both database and markup language knowledge. This technique is useful in many applications, such as food, ingredient and chemical labeling, where the entire contents of the text object needs to change from label to label.

1. Ensure that you have a database with markup language stored in a field.
2. Connect to that database using **BarTender's Database Setup** button .
3. Click on the **Rich Text** button  of the **Object** Toolbar.
4. Click on the Label Design Area to create the default Rich Text object.
5. Double-click on the object to open the **Modify** dialog.
6. In the **Markup Language** option, choose the appropriate setting: RTF, HTML, or XAML.
7. Select to the **Data Source** tab.
8. Change the **Source** from **Screen Data** to **Database Field**.
9. Select the field in your database that contains the desired markup language.
10. Press **Ok** to close the **Modify** dialog.

### *To Create a Rich Text object that uses VB Script to Dynamically Create Markup Language*

This requires both very advanced markup language knowledge and advanced programming skill. However, this technique does allow you to create and print advanced objects that would otherwise be impossible. For example, you can define tables of text that pull data from external sources in order to create table or list objects such as packing slips.

1. Click on the **Rich Text** button  of the **Object** Toolbar.
2. Click on the Label Design Area to create the default Rich Text object.
3. Double-click on the object to open the **Modify** dialog.
4. In the **Markup Language** option, choose the appropriate setting: RTF, HTML, or XAML.
5. Select the **Data Source** tab.
6. Change the **Source** from **Screen Data** to **VB Script**.
7. Set the **Script Type** to either **Multi-Line Script** or **Event Control Scripts**.
8. Write your VB Script to create the markup language and assign it to "Value". (Yes, this is the hard part.)
9. Press **Ok** to close the **Modify** dialog.

## Two-Sided Printing

### Prior to 9.4

Previously, BarTender would only let you design one-sided documents. With a duplex-capable printer, you could still print on both sides of your paper, but you would be limited to outputting the same design on the front as on the back. This was useful for saving paper, but it would not allow you to print a different design on the back of a document.

### New in 9.4

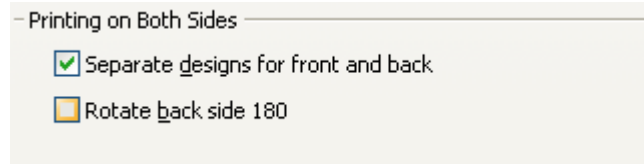
BarTender now lets you create separate designs for the front and back of your documents. This means that, using a duplex-capable printer, you can automatically print different designs on each side of your media. This lets you take full advantage of many new label printers being introduced that can now print on the label backing as well as the front. For example, you might want to print a shipping label on the normal front side of your labels and print a packing list on the back. Then, after you apply the shipping label to a box, you have your packing list already printed out and ready to insert into the package or an envelope.

Creating and printing two-sided designs requires the Professional edition or better.

## Using Two-Sided Printing

### Page Setup Dialog

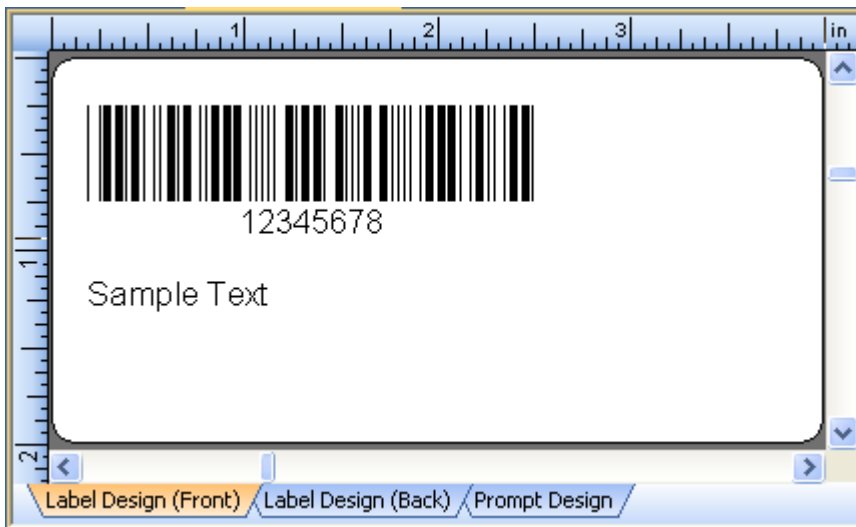
On the **Page** tab of the **Page Setup** dialog, a **Printing on Both Sides** section was added containing two check box controls as follows:



- **Separate designs for front and back** - When this option is checked, the bottom left corner of your Label Design Area will display two tabs as follows:



Each tab corresponds to a completely separate design for printing on the front and back of your media.



*When you enable two-sided printing, tabs at the lower left of your Label Design Area let you easily switch between your two label designs.*

- **Rotate back side 180°**  
When unchecked (the default), the top edge of the front of your print outs will align with the top edge of the back. That is, if you look at the front of your printed media when it is right-side-up, if it were transparent-enough to see through to the back side, the back side would *also* be right-side up.
- Otherwise, if you enable this option, the *bottom* edge of the front of your print outs will align with the top edge of the back. That is, if you look at the front of your printed media when it is right-side-up, if it were transparent-enough to see through to the back side, the back side would be upside down.

### **Changes to the Print Dialog**

A **Print on Both Sides** checkbox was added to BarTender's **Print** dialog. It is disabled unless your printer supports printing on both sides (duplex). This checkbox can be used both for one-sided designs and two-sided designs. For one-sided designs, this functions primarily as a paper saver.

## **Live Database View in Label Design View**

### **Prior to 9.4**

Many BarTender label designs connect to a database in order to merge data into a design at print time. However, when you designed labels in the past, you only saw your “screen data” at design time. This could make it difficult to optimize your design to best accommodate all of your label objects and data, since you might not always in advance know the size and contents of the data to be merged in. The only way to see the database field values merged into the label design was to do a Print Preview or actually print out sample labels. This could result in a tedious, cyclical series of printing tests and adjustments in order to complete a design.

### **New in 9.4**


BarTender now lets you merge database fields into your design and view them at design time right in the Label Design Area. This facilitates much quicker and easier label design as you can quickly view the results of a database merge and adjust for the size requirements of your database fields at design time. A Database Navigator Toolbar has been added to the bottom left of the Label Design Area that allows you to:

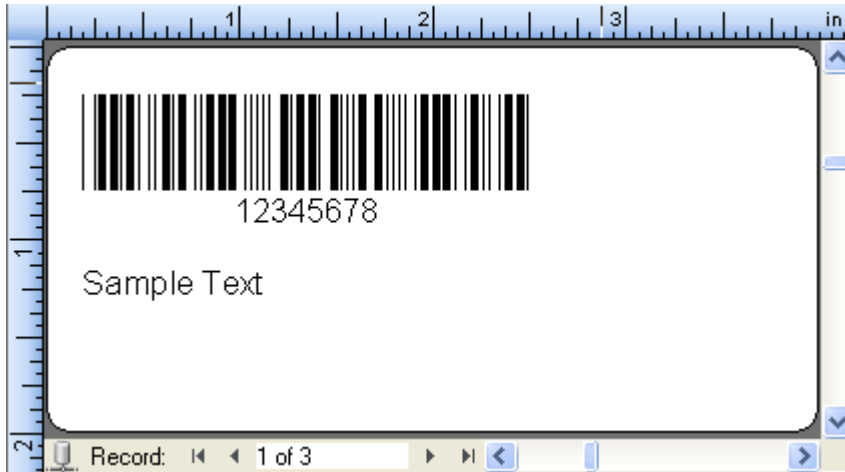
- Connect and disconnect from the database
- Go to the next or previous record
- Go to the first or last record
- Go to a specific record number

Database access, including the live database view, requires the Professional edition or better.

## **Usage**

### **Database Navigator Toolbar**

Once you have specified a database connection using Database Setup , the Database Navigator Toolbar will appear at the bottom left of the Label Design Area. Sub-strings on the label that are set to read from a database field will then automatically show values from the database, starting with the first record. The intuitive toolbar buttons make it easy to navigate to and view other records.



If you use the connect/disconnect button on the toolbar (lower left corner of illustration) to disconnect from the database, then the database field sub-strings on the label design will display their fixed sample data. When you reconnect, the sub-strings will once again display live data from the database.

## Embedded Revision Log

### Prior to 9.4

Previously, the revision information about BarTender documents was only available using BarTender's Librarian companion application. Although Librarian is a very powerful security and document control tool, it requires use of the Enterprise Automation edition of BarTender. Librarian also can only perform these functions if you store your documents within Librarian. In addition, although Librarian can save the time and date of the revision, along with user-supplied comments, Librarian cannot automatically record details about the actual changes that were made.

### New in 9.4

In BarTender 9.4, you now have the option of enabling the Embedded Revision Log. When enabled, BarTender embeds selected revision information into the Label Format file (.BTW) every time it is saved. This information automatically includes a list of actions that were performed on the document (e.g. Added Text Object, Moved Text Object and Changed Font Size), which objects were changed, when the changes were made, who made them, and an optional user-supplied comment.

This new functionality allows administrators to more closely track the changes made to their BarTender documents. It allows for troubleshooting of unexpected changes and also provides an audit trail where authors can document both the changes they made and why they made them. The Revision Log is designed more for recording information about changes than for

workflow management and publishing control. The Revision Log simply does not provide the same comprehensive document control functionality that Librarian offers (including revision rollback), but it is adequate for some document control applications. However, BarTender's Embedded Revision Log feature can be used in combination with Librarian's comprehensive document and version control functions to deliver a remarkably-detailed document history. The Embedded Revision Log requires the Professional edition or better.

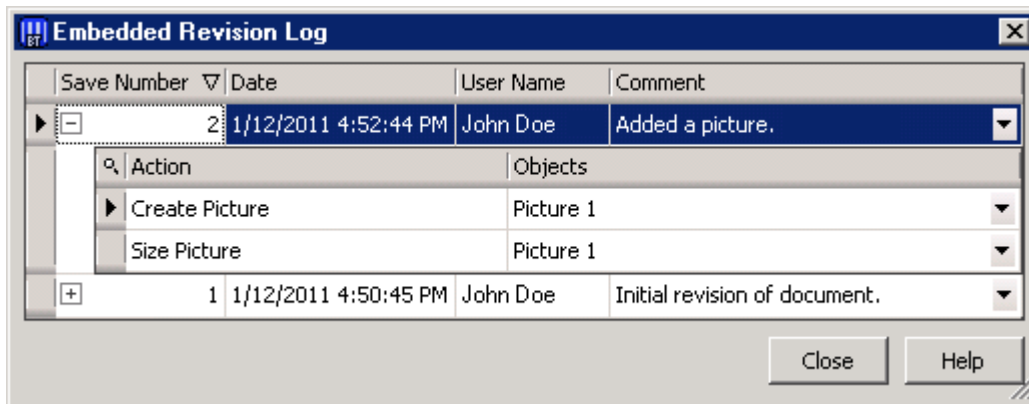
## Usage

### *The Administration, BarTender Document Setup Dialog*

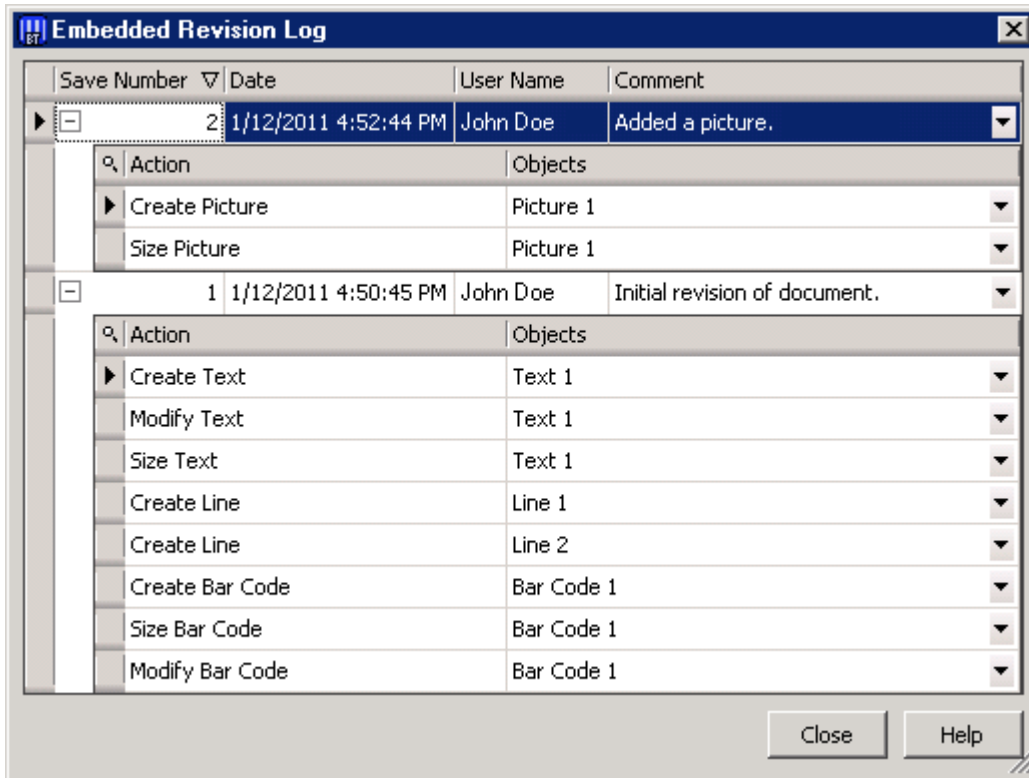
BarTender's Administration menu has a new option called "BarTender Document Setup." This dialog may be used to enable the Embedded Revision Log and specify whether a user-supplied comment is required when saving a document.

### *The File, View Embedded Revision Log Dialog*

The **File** menu has a new option called **View Embedded Revision Log** that displays the revision log. When viewing the log, clicking on the plus sign to the left of any of the listed **Save Numbers** displays a list of the actions performed on the document during that editing session.



*Clicking on the plus sign to the left of the Save Number displays the Action List associated with that editing session. (Note that the plus sign then turns into a minus sign.)*



The same revision log with the details of another editing session expanded.

## System Database SDK

This feature is intended for use by .Net programmers.

### Prior to 9.4

The BarTender System Database can log a variety of information, including application messages and details about print jobs. Logging to the System Database is required in order to be able to reprint past print jobs. However, prior to version 9.4, the only way to view this information and reprint jobs was with History Explorer and Reprint Console.

### New in 9.4

BarTender 9.4 introduces an SDK (software development kit) for the BarTender System Database SDK. The new SDK allows automation of functions that:

- Query information from the data tables you can view in History Explorer, for example:
  - BarTender Print Jobs
  - Application Messages
- Query a print job's final status or entire history
- Request that a job be reprinted

The new SDK allows ISVs, VARs, and advanced end-users can create more seamless integrations between their systems and the BarTender suite. External systems can now directly access the print job history stored in the System Database, as well as take advantage of BarTender's built-in reprint capability. The BarTender System Database and the System Database SDK are only available with the Automation edition and better.

## Usage

### *BarTender's .NET SDKs*

Documentation and sample source code are installed with the BarTender .NET SDKs. See the BarTender's .NET SDK's whitepaper for more information, including installation instructions.

## Librarian SDK

This feature is intended for use by .Net programmers.

### Prior to 9.4

Previously, there was no automated access to the features and data store of Librarian. In order to use the features and access the files in Librarian, you had to manually interact with Librarian or BarTender directly.

### New in 9.4

BarTender now includes the Librarian SDK, the second brand new SDK being introduced with version 9.4. It allows you to automate tasks you would otherwise perform in Librarian, such as:

- Add, remove, and rename documents
- Create, rename, and delete folders
- Get the document preview
- Enumerate document
- Query information about a document
- Check in/out document
- Change a document's state

Now, ISVs, VARs, and advanced end-users can create more seamless integrations between their systems and the BarTender suite that use Librarian for document and workflow management. Librarian and the Librarian SDK are only available with the Enterprise Automation edition and better.

## Usage

### BarTender's .NET SDKs

Documentation and sample source code are installed with the BarTender .NET SDKs. See the BarTender's .NET SDKs whitepaper for more information, including installation instructions.

## Other Improvements

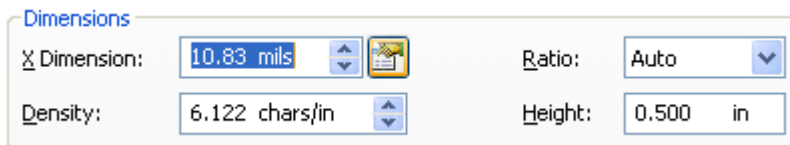
### Bar Codes

#### Target X Dimension

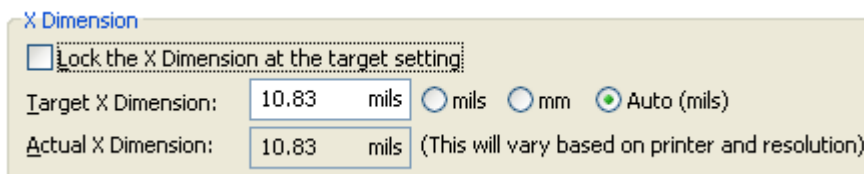
Previously, you could only specify bar code X Dimensions that the printer you were attached to was capable of achieving. This could result in your having to select an X Dimension that was close to what you wanted, but not necessarily your ideal value. For example, if your target was a 10mil X Dimension, but the closest X Dimension your currently-specified printer was capable of printing was 10.2mils, then you had to specify 10.2mils. Subsequently, if you selected a different printer, BarTender would try to retain the original, less-than-ideal 10.2mil X Dimension value.

Now, when a new printer is selected, BarTender 9.4 can optionally examine the X Dimensions available with the new printer and see if any of them are closer to the desired ideal specified in the new **Target X Dimension** control.

To access this new feature, first select the square properties button to the right of the X Dimension value in the **Modify Selected Bar Code** properties panel.



This brings up the **Bar Code X Dimension** dialog. Next, specify the ideal X Dimension in the **Target X Dimension** control. The X Dimension of your bar codes will now automatically change to come as close as possible to the desired ideal value as you select different printers. (To additionally *lock* the X Dimension at a desired ideal, please see the next section of this document.)



For more and better details, please press the **Help** button.

### **Lock X Dimension**

Previously, there was no way to lock the X Dimension of a bar code. This left bar code objects vulnerable to inadvertent X Dimension changes. BarTender 9.4 adds the ability to **Lock the X Dimension at the target setting**. This prevents modification of the X Dimension using the mouse in the Label Design Area, as well as from within the Modify dialog. To access this feature, press the **Properties** button to the right of the **X Dimension** control in the **Modify** dialog. Once there, press **Help** for additional information.

### **Manual Bar/Space Adjustment**

BarTender 9.4 adds a “Manual Bar/Space Adjustment” control that allows you to directly modify the bar vs. space ratio. This lets you decrease or increase the bar width without changing the effective X Dimension. This allows compensation for various printing issues such as ink spread, thermal print head temperature variance, and alternate printing technologies, such as laser engraving. To access this feature, press the **Properties** button to the right of the **X Dimension** control in the **Modify** dialog. Once there, press **Help** for additional information.

### **ITF-14: New Symbology**

Although BarTender has long supported ITF-14, it is now listed as its own symbology (separate from Interleaved 2-of-5). This makes it quicker and easier to create labels with bar codes that comply with GTIN-14 data restrictions.

### **ITF-14: Device Printing of Bearer Bars**

Interleaved 2-of-5 (and ITF-14) bearer bars can now be rendered using device lines or boxes on most printer families. Previously, when using bearer bars, the entire bar code had to be rendered as a graphic.

### **UPC/EAN: Quiet Zone Indicators in Human Readable**

The human readable options for UPC/EAN bar codes now support the printing of quiet zone indicators (the left and right angle bracket characters) on the left and right side of the symbol.

### **Code 128: Encode Alternate Character Sets**

Previously, Code 128 would only encode ASCII characters. Code 128 now has an **Encoding** control that lets you encode various code pages according to the International Symbology Specification for Code 128 (ISS-128). This allows you to encode text from a wide number of languages, including Western, Asian, or Eastern European languages into Code 128. You can even encode UTF-8.

### **QR Code: Manual Selection of a Fixed Size**

Previously, QR Code bar codes would always automatically size based on how much data was being encoded. Now, you can optionally specify a *constant* size. A new **Symbol Version** control has been added. It defaults to **Auto**, making the behavior of QR Code backward compatible with older versions of BarTender. Alternatively, however, you can now specify one of 40 fixed sizes for a QR Code.

### **GS1 Composite, GS1-128 (CC-C): Column Control**

Previously, the number of columns in the CC-C was always set to match the width of the Code 128 bar code. Now there is a **Columns** control. It defaults to **Auto**, which continues the behavior of previous versions of BarTender. However, you can override this and specify between 1 and 30 columns, making the CC-C narrower or wider than the Code 128 bar code.

### **GS1 Composite, UPC/EAN: Guard Bars**

Guard bars are now supported for UPC and EAN variants of GS1 Composite.

## **Prompting**

### **Integrated Print Preview**

Previously, the only way to get a print preview when using prompting was to select **File, Print Preview**, fill out the data on the form, and then press the **Preview** button.

Now, with BarTender 9.4, you can display a print preview directly on the data entry form and have it dynamically update as you enter data. This allows you to easily review the data to make sure that it looks correct before printing. The key to this new functionality is the new **Preview of Label** option now available for pictures created on the prompt form.

#### *To take advantage of print previewing on the data entry form:*

1. Create a picture object on the form.
2. Double-click on the picture to launch the **Modify** dialog.
3. Select the **Picture** tab. This tab contains a **Picture Source** group box that includes a **Type** drop-down list box with three choices: **Linked**, **Embedded**, and **Preview of Label**.
4. Select **Preview of Label** and you now have a print preview right on your prompt form.

### **Easier Group Box Editing**

When modifying a prompted data-entry form, dragging a group box will now automatically move any controls contained within the group box.

### **Additional Scale Manufacturers Added**

BarTender version 9.4 adds the following manufacturers to the list of supported built-in scales:

- RADWAG
- A&D Weighing

(Scale support requires the Automation edition or better.)

## Minor Usability Improvements

### *Partial Human Readable Visibility*

It is now easier to set the visibility per sub-string for a bar code's human readable text. You still use the bar code's **Modify** dialog. However, previously, you first had to set the **Visibility** of the human readable characters to **Set by Data Source** and then one-by-one go into the **General** tab of the **More Options** dialog for each sub-string and enable each ones **Visible when used as human readable characters** property. The entire process is now handled quickly and easily on the **Human Readable** tab. You simply select **Set per sub-string** and then press the **Select...** button to specify which sub-strings will be visible.

### *Logging Sub-strings to a Text File*

It is now easier to select which sub-strings will be logged to a text file. Previously, you had to open the **Modify** dialog for each object on the label, go into the **General** tab of the **More Options** dialog for each sub-string, and enable logging.

Now, the entire process is handled by using the main **Administration** menu. Select the **Logging Setup...** dialog and then **Text File Setup...** On the **Sub-strings to log** option, specify **Selected sub-strings** and then press the **Select...** button to specify which sub-strings to log.

The **Sub-strings to log** option in BarTender 9.4 now also has a **Named Sub-Strings** setting which automatically logs only *named* sub-strings. Additionally, the order in which the substrings displayed was previously not consistent between versions of BarTender. Starting with version 9.4, BarTender now logs the sub-strings in alphabetical order.

## The Online Help System

### *Unified Table of Contents*

Help for BarTender and its companion applications now share a unified table of contents. This allows linking of topics between applications and allows users to more easily gain a better understanding of the entire system without having to switch between help files.

## Batch Maker

### *Added support for Media Handling*

The **Overrides** tab now includes options to specify media handling. Simply check the **Media Handling** checkbox and select the desired option in the **Action** list, e.g. **Cut** or **Pause**.

### *Improved UI for Managing the Label Format List*

In addition to the existing ability to **Add** and **Remove** entries in the displayed list of label formats, **Cut**, **Copy**, and **Paste** functions have now also been added. Multi-select functionality is now supported as well.

## Security Center

### *Added "Save As" Permission*

Added a separate permission called **Save Copy of Label Format**. This allows administrators to independently control **Save** vs. **Save As**, instead of having just the one **Save** permission to govern both actions. When **Save** but not **Save As** is enabled, users can save changes to an existing label format, but they cannot alter its name or location. With **Save As** enabled, users can effectively create copies of label formats and place them in other locations on their network. See Security Center's Online Help for more information.

## Automation and SDKs

### *Moved all SDKs and Dependent Assemblies into the GAC*

All assemblies required by the SDKs are now installed to the GAC (Global Assembly Cache). Now SDK DLLs and their dependent DLLs don't need to be copied into the same folder with the customer's application. This provides for much easier installation and deployment of applications that use BarTender's SDKs.

### *Added New ActiveX Automation Interfaces*

Three new methods were added:

- **DesignObject.ExportToClipboard** - Allows exporting a single object image to the clipboard.
- **DesignObject.ExportToFile** - Allows exporting a single object image to a file.
- **Format.ExportPrintPreviewRangeToImage** - Allows you to limit the range when exporting print preview images.

See the "Automation with ActiveX" topic in BarTender's Online Help for more information.

## Available Seagull White Papers

### General White Papers

- The Advantage of Drivers by Seagull

### Companion Applications

- Printer Maestro, Part 1: Enterprise Print Management
- Librarian
- BarTender Security Center
- BarTender Web Print Server

### Recent Upgrades

- What's New in the Latest BarTender

### Integration White Papers

- Integration Overview
- Commander
- Commander Examples
- BarTender's .NET SDKs
- BarTender's ActiveX Automation Interface
- Exporting Printer Code Templates
- Using BarTender with Terminal Services and Citrix MetaFrame
- Integration with Oracle's WMS and MSCA
- Integration with IBM WebSphere Sensor Events
- Integration with SAP

### Miscellaneous White Papers

- Weighing Scales
- Dynamically Changing Objects at Print-Time using VB Script
- GHS Labeling
- Licensing for BarTender's Automation Editions
- Printing International Characters Using BarTender
- BarTender Software Activation
- Using BarTender's Application Identifier Wizard
- Optimizing Label Printing Performance
- Status Monitor Overview
- Silent Install

### For downloadable versions, visit:

[www.seagullscientific.com/asp/whitepapers.aspx](http://www.seagullscientific.com/asp/whitepapers.aspx)

